



(19) **United States**

(12) **Patent Application Publication**

Fichou et al.

(10) **Pub. No.: US 2001/0023443 A1**

(43) **Pub. Date: Sep. 20, 2001**

(54) **SYSTEM AND METHOD FOR RESERVING A VIRTUAL CONNECTION IN AN IP NETWORK**

(75) Inventors: **Aline Fichou**, La Colle sur Loup (FR); **Jacques Fieschi**, St Laurent du Var (FR); **Claude Galand**, La Colle sur Loup (FR); **Jean-Francois Le Pennec**, Nice (FR)

Correspondence Address:  
**David R. Irvin**  
**IBM Corporation T81/062**  
**PO Box 12195**  
**Research Triangle Park, NC 27709 (US)**

(73) Assignee: **International Business Machines Corporation**, Armonk, NY (US)

(21) Appl. No.: **09/811,038**

(22) Filed: **Mar. 16, 2001**

(30) **Foreign Application Priority Data**

Mar. 20, 2000 (EP)..... 00480027.2

**Publication Classification**

(51) **Int. Cl.<sup>7</sup> G06F 15/16**

(52) **U.S. Cl. 709/227**

(57) **ABSTRACT**

A method and system for reserving a virtual connection from a source workstation to a destination workstation. Packets of data are transmitted over a network between an ingress node of the source workstation and an egress node of the destination workstation. In accordance with the method of the present invention, a reservation request is delivered from the source workstation to a reservation server. The reservation server includes a user database for storing the identification of each user allowed to access to the reservation server and also stores the rights of each user. The reservation server further includes a network database for storing the information describing a network capacity required to set up the virtual connection. A verification is then performed to determine whether or not the reservation request may be validated in view of user information within said source workstation. A second verification is performed to determine whether or not the capacity of said network is sufficient to meet the requirements of the reservation request. In response to the capacity of the network being sufficient to meet the requirements of the reservation request, a virtual connection is established from the ingress node to the egress node.

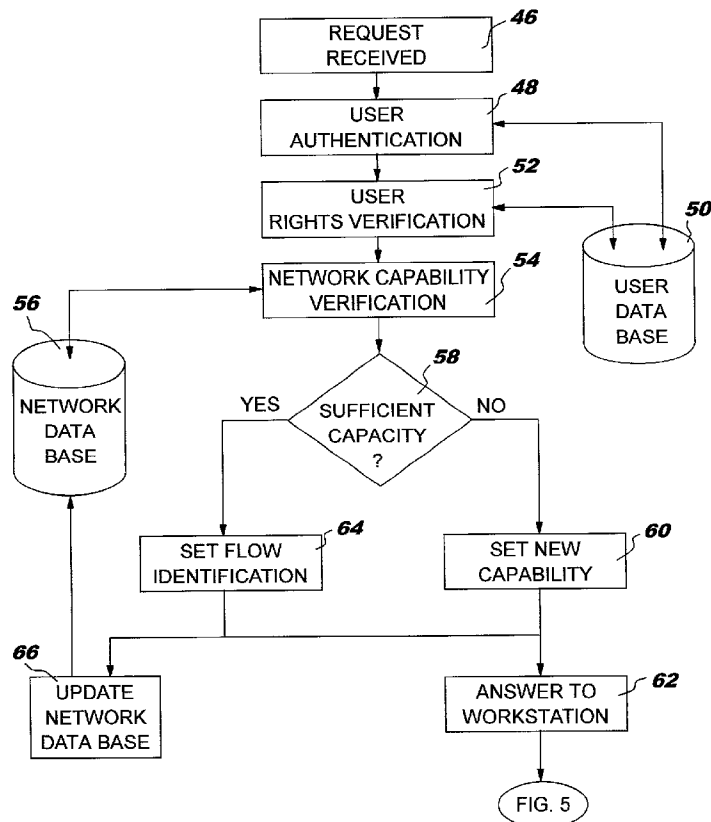


FIG. 1

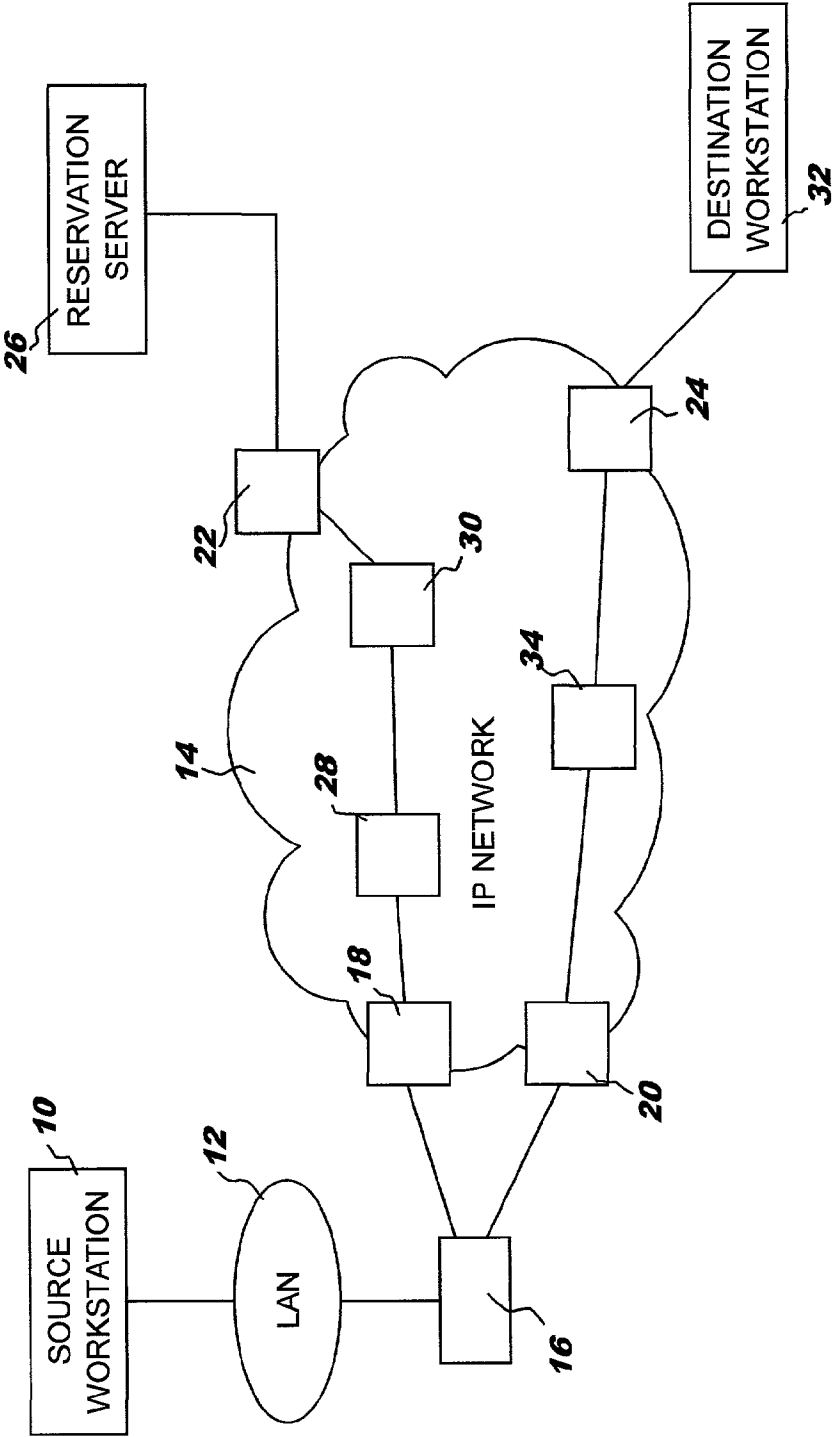


FIG. 2

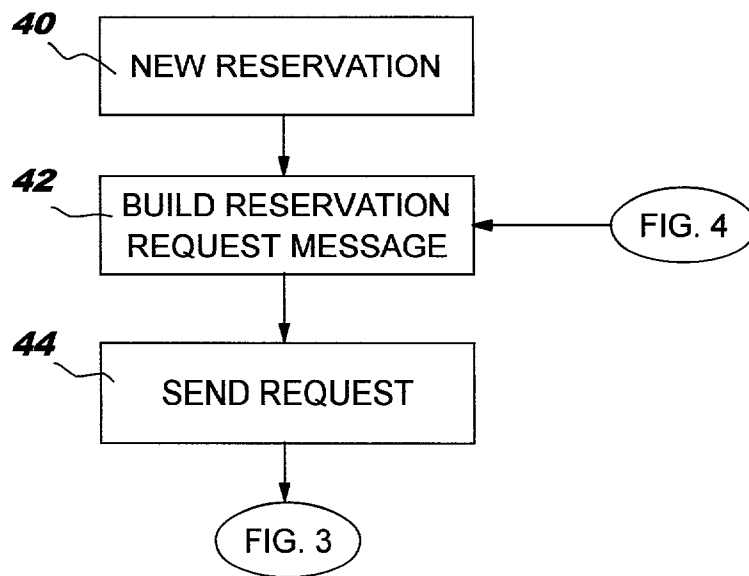


FIG. 5

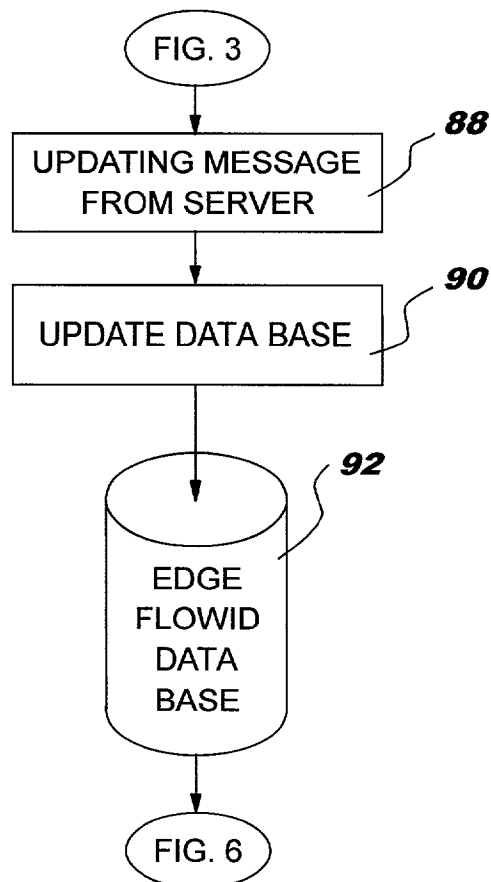


FIG. 3

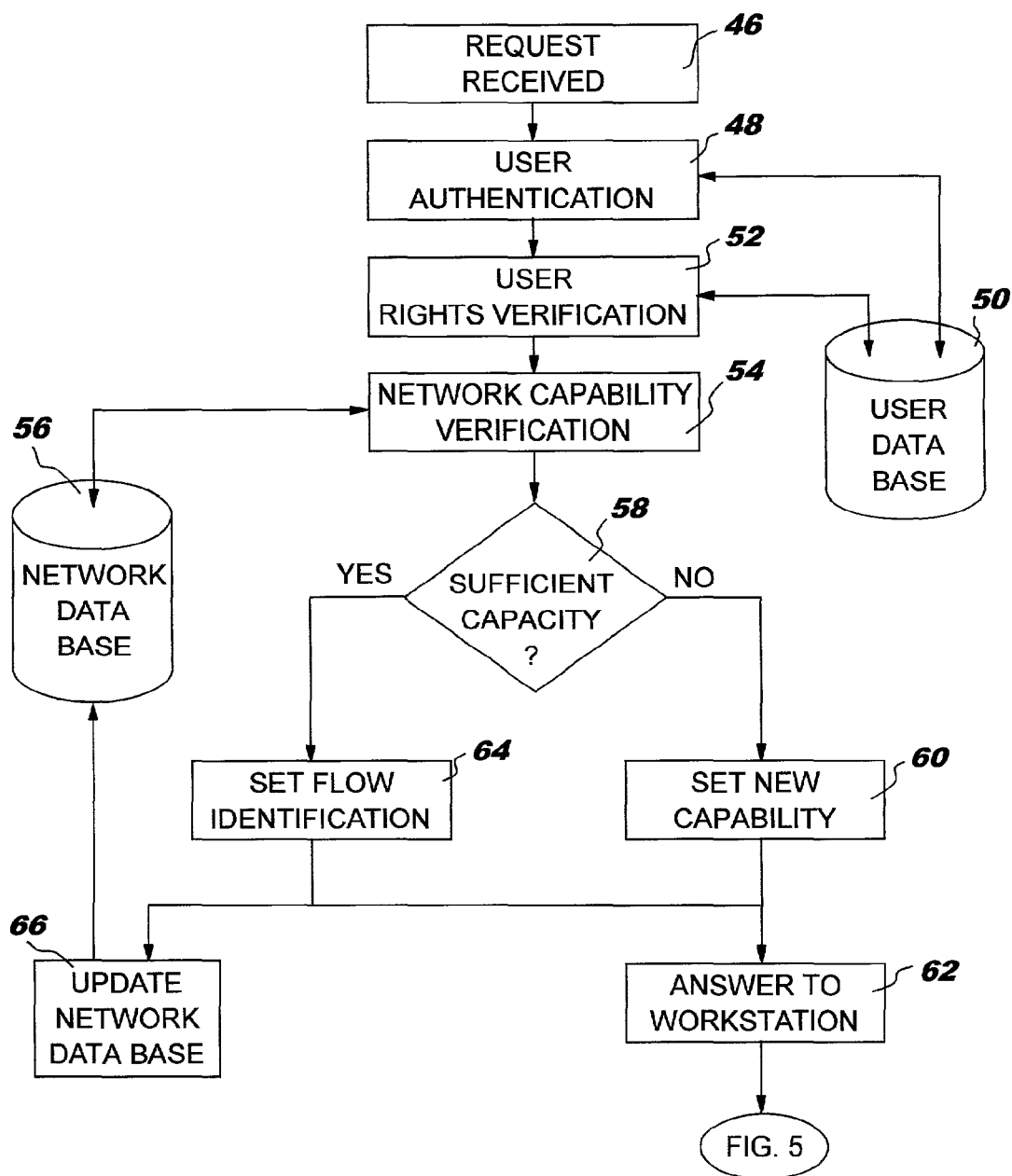


FIG. 4

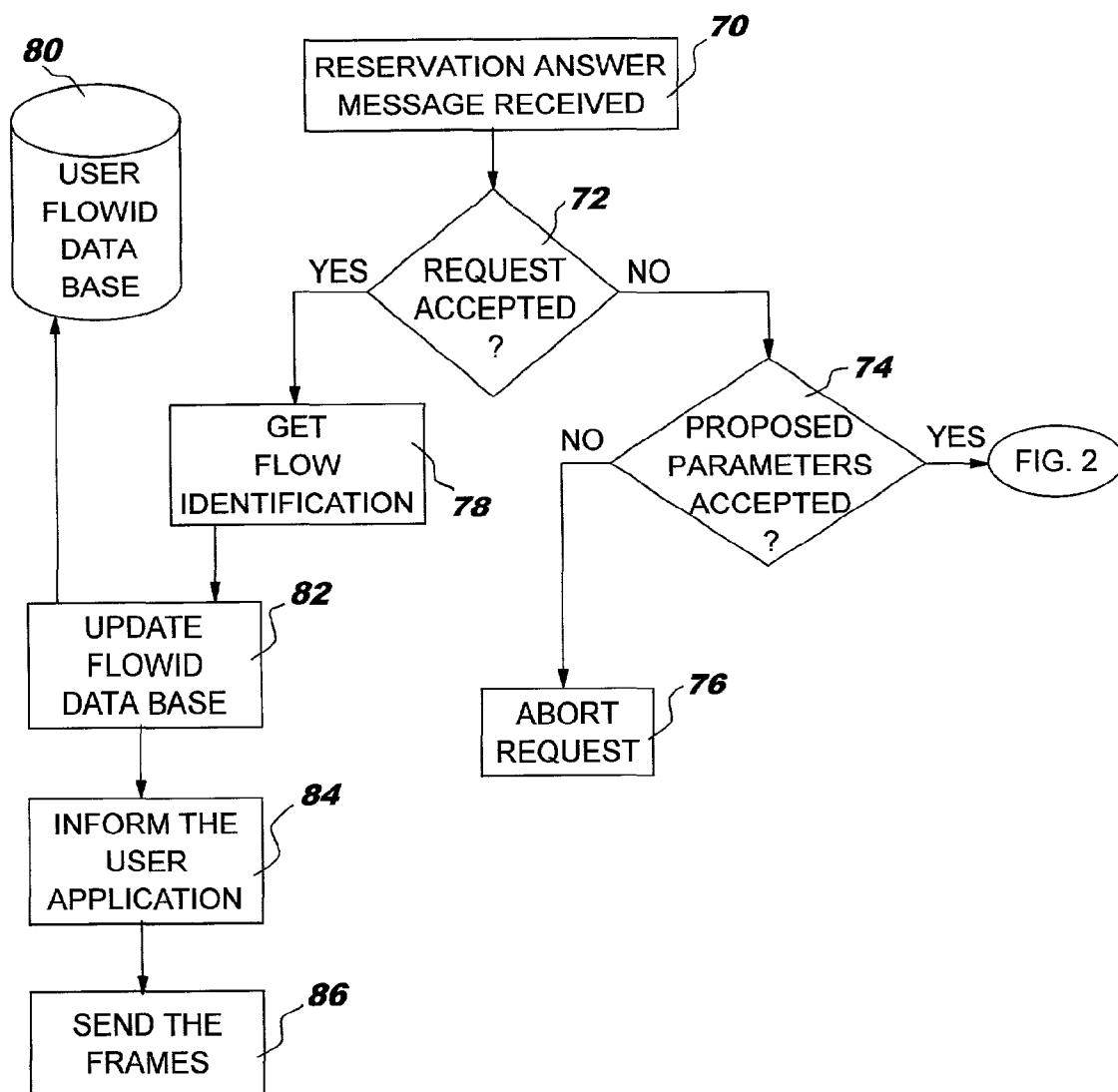
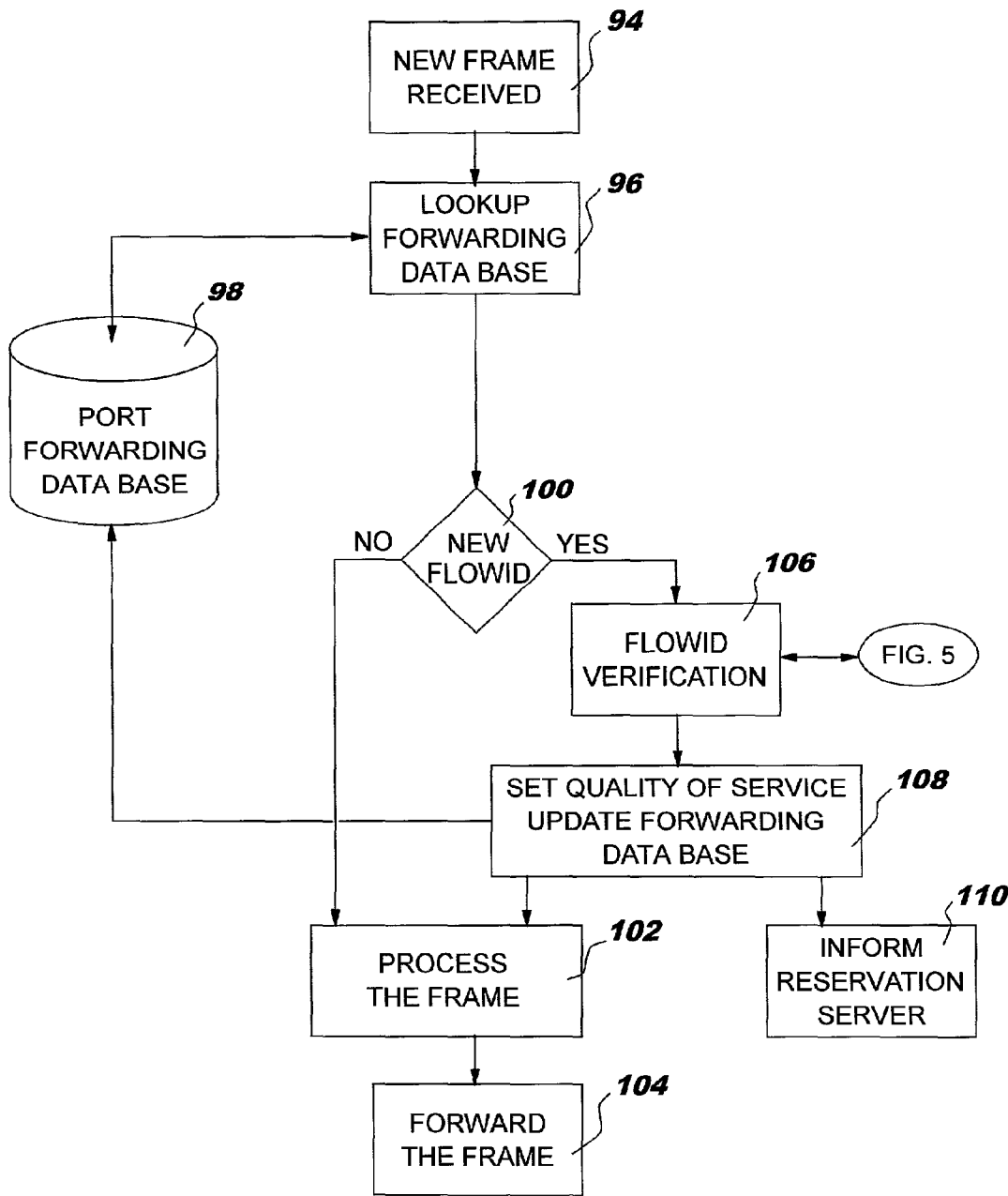


FIG. 6



## SYSTEM AND METHOD FOR RESERVING A VIRTUAL CONNECTION IN AN IP NETWORK

### BACKGROUND OF THE INVENTION

#### [0001] 1. Technical Field

[0002] The present invention relates in general to reserving virtual connections having a designated Quality of Service (QoS) in an Internet Protocol (IP) network, and relates in particular to a system and method for reserving a QoS designated virtual connection in a network equipped with a reservation server.

#### [0003] 2. Description of the Related Art

[0004] For a data transmission wherein a connection is first established before the transmission takes place, bandwidth is reserved along the connection path taking error checking into account. Protocols that employ such an approach use a call-connect packet to initiate a session and a connect-confirm response packet to complete the call sequence.

[0005] For connection-oriented systems, a virtual circuit (VC) between the two endpoints is allocated to determine a route at call set-up time. During call set-up all necessary resources on the virtual circuit are reserved and logical channels are allocated. Only when the connection is cleared are the reserved resources and logical channels released.

[0006] Asynchronous Transfer Mode (ATM) networks, a call set-up process is established using virtual paths/virtual circuits (VP/VC). All ATM communications are set up using a controlled method wherein user-specific subscriber options are identified and utilized in establishing each connection. Generally, connections are not established by end users but by network devices or nodes. It is becoming more common, however, to control packet-switched telecommunications directly at the IP network level, which allows end-users to directly establish connections.

[0007] A connectionless transmission that is used, for example, at the IP network level, is a form of packet-transmission that does not require communications between the end devices before the transmission of data. Such connectionless packet-transmission employs no virtual circuit and is well-adapted to transmit short messages composed of a limited number of packets. In simple bus or ring networks, there is no problem implementing connectionless systems because the path-choice is limited. In meshed and complex networks, however, the significant problems arise. First, each router must possess substantial processing intelligence for processing the packet header. In addition, the network requires an efficient mechanism to ensure that all routers or nodes have an up-to-date information relating to the overall topology.

[0008] The Resource Reservation Protocol (RSVP) is a network-control protocol that enables IP applications to obtain special Qualities of Service (QoS) for their data flows. RSVP produces connection-oriented like communications having an established QoS. RSVP is not however a routing protocol. Instead, it works in conjunction with routing protocols and installs the equivalent of dynamic access lists along the routes that routing protocols calculate. RSVP can be used by end-users to reserve bandwidth within all routers included on the path to the destination. The

limitation of RSVP is that if the bandwidth is already used, there is no way to add more reserved communications. In addition, there is no end-user avenue for requesting additional bandwidth.

[0009] Another problem with conventional reservation protocols such as RSVP is that they do not provide sufficient scalability since each request is handled by each network device or node in the path used by the connection.

### SUMMARY OF THE INVENTION

[0010] A method and system for reserving a virtual connection from a source workstation to a destination workstation are disclosed herein. Packets of data are transmitted over a network between an ingress node of the source workstation and an egress node of the destination workstation. In accordance with the method of the present invention, a reservation request is delivered from the source workstation to a reservation server. The reservation server includes a user database for storing the identification of each user allowed to access to the reservation server and also stores the rights of each user. The reservation server further includes a network database for storing the information describing a network capacity required to set up the virtual connection. A verification is then performed to determine whether or not the reservation request may be validated in view of user information within said source workstation. A second verification is performed to determine whether or not the capacity of said network is sufficient to meet the requirements of the reservation request. In response to the capacity of the network being sufficient to meet the requirements of the reservation request, a virtual connection is established from the ingress node to the egress node.

[0011] All objects, features, and advantages of the present invention will become apparent in the following detailed written description.

### BRIEF DESCRIPTION OF THE DRAWINGS

[0012] The above and other objects, features and advantages of the invention will be better understood by reading the S following more particular description of the invention in conjunction with the accompanying drawings wherein:

[0013] FIG. 1 is a block diagram depicting a data transmission system wherein an IP network is equipped with a reservation server according to the principles of the present invention;

[0014] FIG. 2 is a flow chart illustrating steps performed within a requesting source workstation during virtual connection reservation in accordance with a preferred embodiment of the present invention;

[0015] FIG. 3 is a flow chart depicting steps performed within a reservation server in response to receiving a reservation request from a source workstation in accordance with a preferred embodiment of the present invention;

[0016] FIG. 4 is a flow chart illustrating steps performed in a source workstation in response to receiving a reservation message from a reservation server in accordance with a preferred embodiment of the present invention;

[0017] FIG. 5 is a flow chart depicting steps performed in an edge node in response to receiving reservation informa-

tion from a reservation server in accordance with a preferred embodiment of the present invention; and

[0018] FIG. 6 is a flow chart illustrating steps performed by an ingress edge node while receiving packets from a source workstation in accordance with a preferred embodiment of the present invention.

#### DESCRIPTION OF THE PREFERRED EMBODIMENT

[0019] With reference to the figures, and in particular with reference to FIG. 1, there is illustrated a block diagram depicting a data transmission system wherein an IP network is equipped with a reservation server according to the principles of the present invention.

[0020] The data transmission system shown in FIG. 1 includes a source workstation 10 attached to a LAN 12. Source workstation 10 may access an Internet Protocol (IP) network 14 through a default router 16. Default router 16 is physically connected to several edge devices including edge nodes 18 or 20, which are themselves connected to edge nodes 22 and 24 though IP network 14.

[0021] In accordance with the depicted embodiment, a reservation server 26 is included within the data transmission system. Reservation server 26 may be accessed by any workstation such as the source workstation 10 through several intermediary nodes such as backbone nodes 28 and 30. When source workstation 10 wants to send data packets to another workstation such as destination workstation 32, a virtual connection through backbone nodes such as backbone node 34 is established by reservation server 26 between source workstation 10 and destination workstation 32.

[0022] Although source workstation 10 may alternately utilize IP network 14 in a non-reserved mode, in accordance with the present invention, it may deliver a reservation request to reservation server 26 when required to accommodate a Quality of Service (QoS) requirement for a particular application. Such a reservation may be a direct reservation to reservation server 26, or a generic reservation forwarded by default router 16 to reservation server 26. Reservation server 26 performs user authentication and determines whether or not the reservation can be granted to this user. If so, the edge nodes involved in the connection, such as nodes 20 and 24, are informed of the new reserved flow, while in parallel, requesting workstation 10 is informed that it can proceed with the communication. A flow identification may be provided to speed up the recognition and validation of that flow at ingress node 20.

[0023] With reference to FIG. 2, there is depicted a flow chart illustrating steps performed within a requesting source workstation during virtual connection reservation in accordance with a preferred embodiment of the present invention. When a user of source workstation 10 needs a new reservation (step 40), which may either be a manual reservation or a reservation requested by an upper-level application, a reservation request message is constructed (step 42) including the necessary parameters such as destination, bandwidth, Quality of Service, type protocol or port number. A specified reservation duration may also be provided or an indication that the reservation is valid until a cancellation message is sent to the reservation server. It should be noted that a

reservation request message can also be constructed when the workstation receives new parameters from the reservation server in response to the request from the source workstation being rejected for reasons explained below with reference to FIG. 4. Once the reservation request message is ready, it is sent (step 44) to the reservation server. The message is typically followed by a classical authentication sequence as explained with reference to FIG. 3.

[0024] Turning to FIG. 3, there is illustrated a flow chart depicting steps performed within a reservation server in response to receiving a reservation request from a source workstation in accordance with a preferred embodiment of the present invention. After receiving the reservation request (step 46), the reservation server initiates user authentication (step 48), which can be a LogonID/password verification or a more sophisticated authentication using certificates. This verification involves the use of a database 50 storing the identification of each user and the user/customer profile when the user of the source workstation is one of multiple users associated with a customer of the server.

[0025] Next, a user rights verification (step 52) is performed using the same database 50 which defines for each user which kind of request he is allowed to perform. The result of such a verification may be in terms of bandwidth required for a call, destination allowed, QoS, etc. The reservation results in an extra cost for the customer in accordance with the type and duration of the communication to be performed. It therefore may be desirable to provide a way for the customer to manage the authorization for each user of the source workstation. If the verification of the user rights fails, the reservation request is rejected by delivering a rejection message (not shown) to the source workstation including a code for the rejection.

[0026] If the request is validated, the process includes steps for assessing the network's ability handle the request (step 54). To perform such a network capability assessment, a network database 56 is utilized to determine the remaining capacity, or bandwidth, of each link in the network. The capacity requested for setting up a virtual connection from ingress node 20 to egress node 24 has to meet QoS parameters within the network. If it is determined that there is insufficient network capacity for handling the reservation request (step 58), an alternate capability proposal is derived with respect to the requesting source workstation (step 60). In such a case, this new capability may be either a lower bandwidth or a lower QoS, which is then sent back to the requesting workstation (step 62). While the alternate capability is being delivered to the requesting workstation, an updating message is transmitted to the edge nodes as explained below with reference to FIG. 5.

[0027] If the network is able to support the reservation request of the source workstation, a flow identification is set (step 64). Such a flow identification includes not only a FlowID field, but also parameters such as source address, destination address, QoS, port number, duration, bandwidth, route or path within the network. Some of this information, such as bandwidth, duration, QoS, is used to update network database 56 (step 66). An answer including the acceptance of the reservation request is sent to the requesting workstation (step 62).

[0028] It should be noted that some parameters such as source address, destination address, port number, route or



path within the network, and Qos are delivered to the edge nodes of the virtual connection as explained below with reference to **FIG. 5**.

**[0029]** With reference to **FIG. 4**, there is depicted a flow chart illustrating steps performed in a source workstation in response to receiving a reservation message from a reservation server after the reservation server has processed the workstation reservation request in accordance with a preferred embodiment of the present invention. After receiving the reservation answer message from the reservation server (step **70**), a test is performed (step **72**) to determine whether or not the reservation answer message is an accepted request confirmation or an alternate capability proposal from the reservation server as explained with reference to step **60** in **FIG. 3**. If the reservation request has not been accepted by the reservation server, a test is performed to determine whether or not the new parameters proposed by the reservation server are acceptable by the user of the workstation (step **74**). If so, a new reservation request message is constructed as explained with reference to **FIG. 2**. If, however, the new parameters are not accepted, the reservation request is aborted (step **76**).

**[0030]** If the request is accepted by the reservation server, the workstation obtains a flow identification defined by a FlowID (step **78**) that the user will use within each packet header to identify the flow to which the packet belongs. Such a FlowID may be a flow label used within IP version 6 (IPv6) or a MPLS label or any identification field within the protocol used by the workstation to communicate with the ingress node. It should be noted that the flow identification is employed in a preferred embodiment but could be bypassed when IP version 4 (IPv4) is used natively, resulting in a more complicated identification on the ingress node port.

**[0031]** After a flow identification or FlowID is obtained, a database **80** storing the user FlowIDs for local accounting is updated (step **82**). Next, the user application running on the source workstation is informed of the FlowID (step **84**) and may start sending the frames of the flow (step **86**).

**[0032]** Turning to **FIG. 5**, there is illustrated a flow chart depicting steps performed in an edge node in response to receiving reservation information from a reservation server in accordance with a preferred embodiment of the present invention. As explained above with reference to **FIG. 3**, an update message is transmitted to the edge nodes by the reservation server after the capacity of the network to fulfill the request has been verified. As illustrated in **FIG. 5**, this update message received by the edge nodes (step **88**) is used for updating the reservation message.

**[0033]** Edge nodes include ingress node **20** (see **FIG. 1**), which receives data frames from the source workstation, and egress node **24**, which receives data frames from the ingress node through the IP network. The data frames are identified either by the FlowID set by the reservation server or by a route identification defined by a RouteID which has been substituted to the FlowID by the ingress node. Such a substitution is provided by the reservation server either to both ingress node and egress node, or only to the ingress node. The information may be the identification of a already known route or all information needed to define a new route. It should be noted that, when the information about the route is sent only to the ingress node, it is necessary to transmit a

complete header within each packet of the flow, whereas some data fields such as the source address, the destination address, the port number and the Quality of Service are not transmitted within the packet header when the information is transmitted to both ingress and egress nodes.

**[0034]** When a substitution from FlowID to a RouteID occurs, not only is the FlowID field is changed, but also fields such as QoS or the type of service (ToS). The objective is to rebuild the same packet at the output of the egress node as the packet at the input of the ingress node, even if some fields are changed within the network except fields such as Time To Live (TTL) which must always be decremented. Furthermore, if replacing the FlowID by a RouteID, it may be useful in the case where two networks are involved, to replace the FlowID corresponding to the first network by a new FlowID corresponding to the second network, the value of this new FlowID being provided by the reservation server of the second network to the egress node of the first network.

**[0035]** Returning to **FIG. 5**, the update message received from the reservation server is used to update (step **90**) a database **92** storing the FlowIDs. The stored information will be used only when a packet is received at the interface of the ingress node as illustrated in **FIG. 6**.

**[0036]** With reference to **FIG. 6**, there is depicted a flow chart illustrating steps performed by an ingress edge node while receiving packets from a source workstation in accordance with a preferred embodiment of the present invention. When a new packet is received by the ingress node (step **94**), the interface process first performs a lookup (step **96**) in its local port forwarding database **98** to check whether the flow to which the received packet belongs is a known flow or a new flow (step **100**). If it is a known flow, the packet is processed and modified (step **102**) before being forwarded (step **104**). For example, non-reserved flows may be forwarded with minor changes such as only TTL decrementation. Likewise, reserved flows may have a new QoS classification and a new identification field. Some fields such as source address and destination address may even be removed if the identification field with the network is unique when the egress node has been informed by the reservation server and is able to replace these address fields within the packet.

**[0037]** If the received packet corresponds to a new flow, a FlowID verification is performed (step **106**) by comparing the FlowID to reserved flows stored in database **92** as explained in **FIG. 5**. When the flow corresponds to an existing flow in the database, the QoS of the flow is set (step **108**) and an update of the port forwarding database **98** is performed in order to find and directly process the subsequent frames of this flow (step **96**). The packet is then processed and modified (step **102**) before being transmitted (step **104**). In addition, the reservation server is informed that a first packet of a new flow has been received and processed which will start a connection timer for this flow for accounting of the use of this reservation. It should be noted that when the flow is not recognized as a reserved flow (step **106**), the packet is processed as a non-reserved flow. In this case, in order to verify that the FlowID is valid, not only the existence of the FlowID is verified, but also the source and destination addresses are checked with the port number. The FlowID and the other above listed IP header parameters are compared to the information given by reservation server

**26** to ingress node **20** for this flow. This verification prevents non-authorized users to reserve bandwidth on the network just by using random FLOWIDs as they will never be sent to destination.

What is claimed is:

**1.** A system for reserving a virtual connection from a source workstation to a destination workstation wherein packets of data are transmitted over an network between an ingress node os said source workstation and an egress node of said destination workstation, said system comprising:

a reservation server accessible by said source workstation including connection setup means for setting up a virtual connection meeting a predefined Quality of Service (QoS) requirement from said ingress node to said egress node in response to a request from said source workstation.

**2.** The system according to claim 1, wherein said reservation server includes a user database for storing the identification of each user allowed to access said reservation server.

**3.** The system according to claim 2, wherein said user database further stores the rights of each user allowed to access said reservation server.

**4.** The system according to claim 1, wherein said reservation server further includes a network database for storing the information describing a network capacity required to set up said virtual connection.

**5.** The system according to claim 1, wherein said source workstation includes a user FlowID database for storing at least one FlowID, wherein said at least one FlowID identifies at least one the flow transmitted from said source workstation.

**6.** The system according to claim 1, wherein said ingress node includes an edge FlowID database for storing at least one FlowID for flows that have been reserved by said reservation server.

**7.** The system according to claim 1, wherein said ingress node includes a port forwarding database for storing information required by said ingress node when receiving a first packet of a flow that has been reserved by said reservation server.

**8.** A method for reserving a virtual connection from a source workstation to a destination workstation wherein packets of data are transmitted over a network between an ingress node of said source workstation and an egress node of said destination workstation, said method comprising:

sending a reservation request from said source workstation to a reservation server;

verifying that said request may be validated in view of user information within said source workstation, wherein said user information is accessible by said reservation server;

verifying that the capacity of said network is sufficient to meet the requirements of said reservation request; and

in response to the capacity of said network being sufficient to meet the requirements of said reservation request, establishing a virtual connection from said ingress node to said egress node.

**9.** The method according to claim 8, wherein said step of verifying that said request may be validated further comprises:

verifying the authentication of said user; and

verifying the user rights to obtain said virtual connection.

**10.** The method according to claim 8, further comprising in response to insufficient capacity of said IP network with respect to a previous reservation request, delivering a new reservation request from said source workstation to said reservation server, wherein said new reservation request includes new parameters that are set in accordance with the capacity of said network as reported from said reservation server to said source workstation.

**11.** The method according to claim 8, further comprising delivering from said reservation server to said ingress and egress nodes, information required to set up a virtual connection from said ingress node to said egress node and a flow identification of the communication to be established such that said ingress node may transmit any packet received from said source workstation over said connection.

**12.** The method according to claim 11, wherein the information sent by said reservation server to said ingress and egress nodes to set up a virtual connection includes a FlowID identifying the flow corresponding to the communication to be established over said virtual connection.

**13.** The method according to claim 12, further comprising comparing a FlowID of a new packet received by said ingress node with at least one FlowID corresponding to at least one reserved virtual connection that has been established from said reservation server to said ingress node.

**14.** The method according to claim 12, further comprising delivering a RouteID from said reservation server to said ingress and egress nodes, wherein said RouteID identifies a route already known by said nodes.

**15.** The method according to claim 11, wherein the header of all packets belonging to the flow using said virtual connection includes a source address, a destination address, a port number, and a Quality of Service identifier.

\* \* \* \* \*